

End user

Consumer

SP

OP

Send user's OpenID identifier.

Association

Authentication Request.

Claimed Identifier

Redirect user to OP.

Obtaining user authentication.

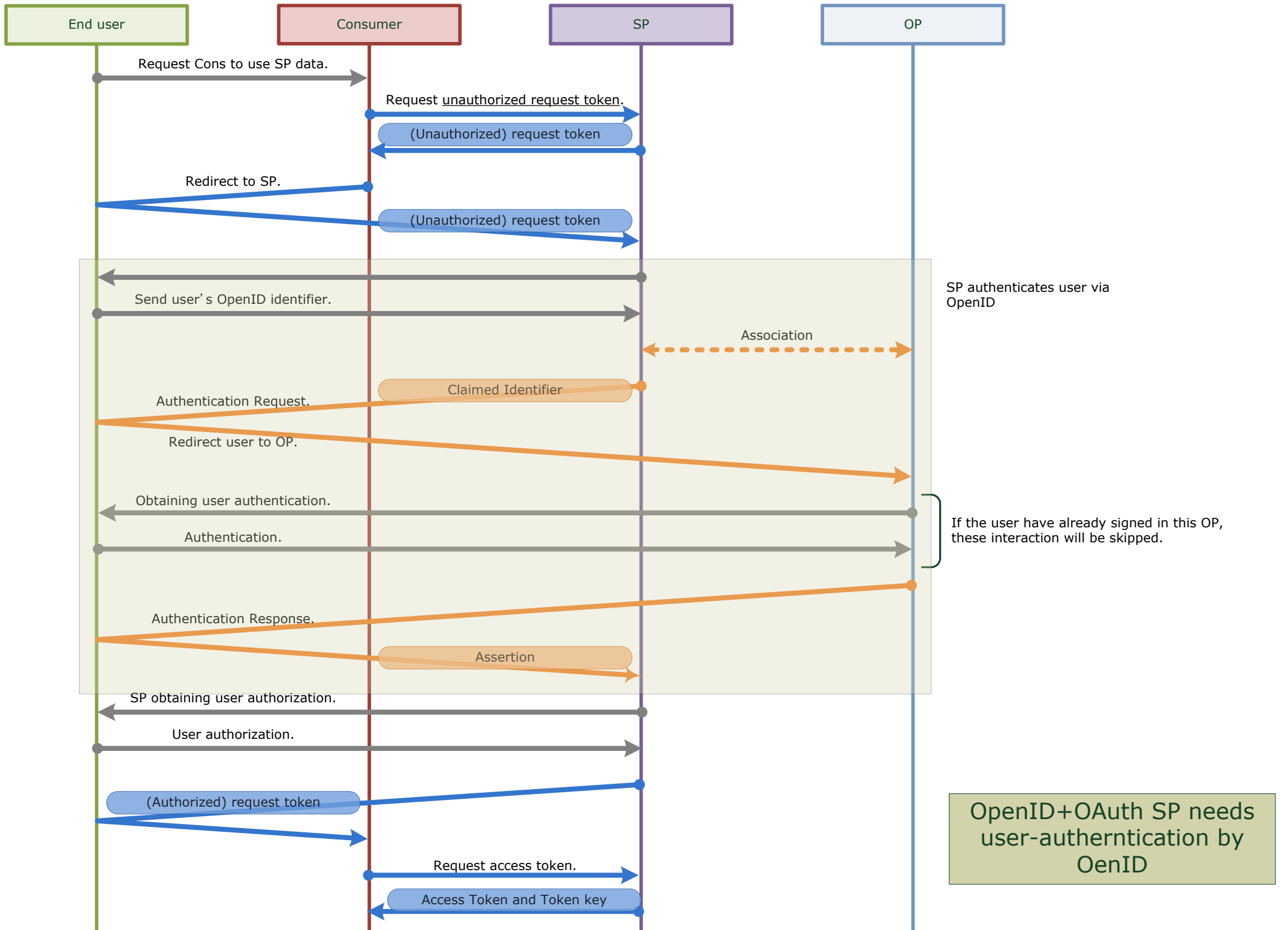
Authentication.

If the user have already signed in this OP, these interaction will be skipped.

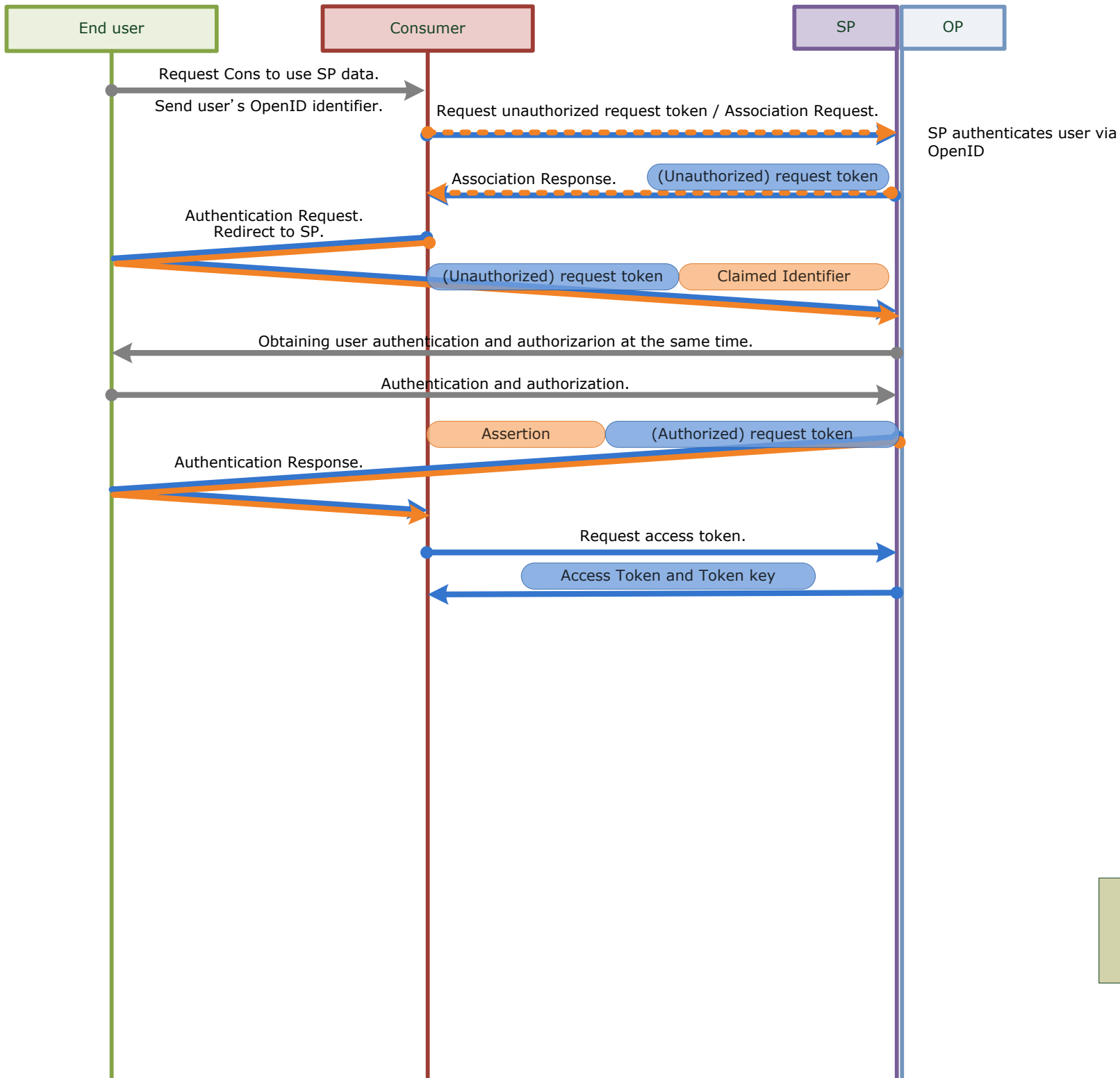
Authentication Response.

Assertion

OpenID



OpenID+OAuth SP needs user-authentication by OpenID



OpenID+OAuth
 Superimposed in case OP
 and SP are same